

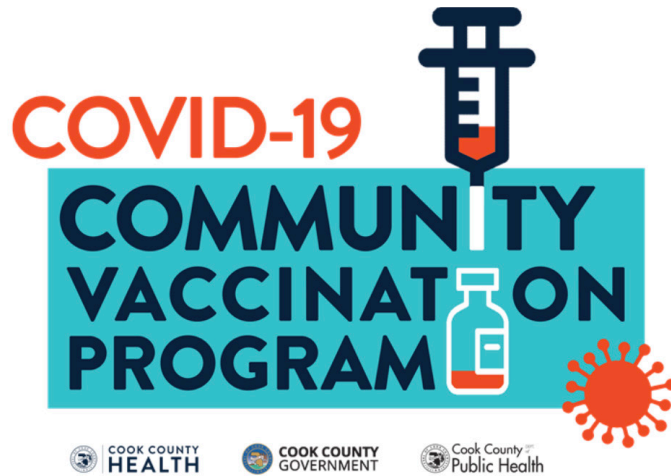
## Cook County Enters the Bridge to Phase Five Reopening Guidance in Suburban Cook County

The Cook County Department of Public Health issued Covid-19 Bridge to Phase Five reopening guidance, which continues to ease mitigation measures with a cautious approach to reopening.

Local guidance follows vaccination metrics: 70 percent of residents 65 and older statewide have received their first dose of the vaccine and there has been no increase in Covid-19 metrics. Statewide, one million people, or 47 percent of the population, has received at least one dose, while more than 800,000 people, or 36 percent, are fully vaccinated.

Phase Five includes the following:

- Retail capacity is 60 percent
- Fitness center capacity is 60 percent. Class size remains the same with up to 50 people indoors and 100 outdoors
- Indoor dining capacity is 75 percent. There are no table-size limits for fully vaccinated people. If not fully vaccinated, table size is limited to 10 people indoors and out
- Zoo and museum capacity is 60 percent
- Festival and outdoor spectator event capacity is 30 people per 1,000 feet



## Residents Ages 12 and Older Are Eligible For Covid-19 Vaccination by Appointment or Walk-In At Matteson and Tinley Park Sites

All Cook County vaccination sites now accept walk-ins from Monday to Saturday, 8:30am to 5pm. People ages 12 and older are eligible for the vaccine.

The closest sites to Olympia Fields are:

- Matteson site located at 4647 Promenade Way in the former Target in Lincoln Mall
- Tinley Park site located at the Tinley Park Convention Center, 18451 Convention Center Drive

For anyone having trouble scheduling a second dose at their original location, Cook County vaccinations sites will take any Illinois resident on a walk-in basis to get their second shot. Those residents need to bring their CRC card and verify that the site offers the same vaccine as their first shot. Most Cook County sites are offering both Pfizer and Moderna vaccines.

Appointments are still recommended and can be made online at [vaccine.cookcountyil.gov](https://vaccine.cookcountyil.gov) or by calling (833) 308-1988, Monday to Friday from 7am to 10pm and Saturday from 8am to 10pm.

Cook County residents who are homebound and eligible can register to be vaccinated at home. Learn more [here](#).

The vaccine is free. Insurance is not needed. There is no out-of-pocket fee.

[Click Here To Learn More and Make an Appointment](#)



## Metra Announces Rider Safety Initiative

During the COVID-19 pandemic, Metra has kept the trains running and made continual improvements to further enhance safety, including installing hand sanitizer dispensers on every train car and requiring masks or face coverings on board.

As part of these continued efforts, Metra recently announced the upgrading of its ventilation system with a three-stage filtration and purification process that uses ultraviolet light, electrical fields and strong filters to create the safest possible environment for riders. Riders can already breathe easy onboard, thanks to hospital-grade MERV-13 air filters, replacing the air on cars every four minutes.

Additionally, there's a ridership dashboard that communicates how crowded trains are to help passengers make informed decisions about their upcoming trips.

Passengers can ride touch-free with the Ventra app. Sign up at [ventrachicago.com](https://ventrachicago.com).

[Learn More About Metra's Safety Initiative](#)

## Help Protect Basic Services In Our Community by Contacting Your State Senator And Representative About The Local Government Distribution Fund

Olympia Fields has joined 275 municipalities throughout the area in urging Springfield to restore local revenue payments.

The Local Government Distributive Fund (LGDF) is generated from income taxes paid by local residents and businesses and collected by the State before it gets redistributed back to municipalities.

LGDF accounts for a sizeable portion of a town's operating budget – in some cases between 10 to 20 percent – which can amount to millions of dollars annually. LGDF funds essential services, such as police and fire, road repairs and maintenance, garbage collection and flood prevention.

The State promised 10 percent of total income tax collections to municipalities on a per capita basis through the fund in lieu of a local income tax. But in recent years, the State has reduced the LGDF share from 10 to 6.06 percent.

Now, Springfield is considering taking additional money from LGDF this year, which would make local governments even more reliant on property taxes when they are challenged to balance their own budgets and maintain essential services.

We encourage you to contact your State Senator and Representative and let them know that you: 1) oppose further LGDF cuts; and 2) support restoring LGDF payments to the full 10 percent level that had been promised.

Restoring LGDF dollars to our community will help relieve the property tax burden and help ensure that basic services remain in place moving forward.

[Click Here for State Senator and Representative Contact Information](#)

---





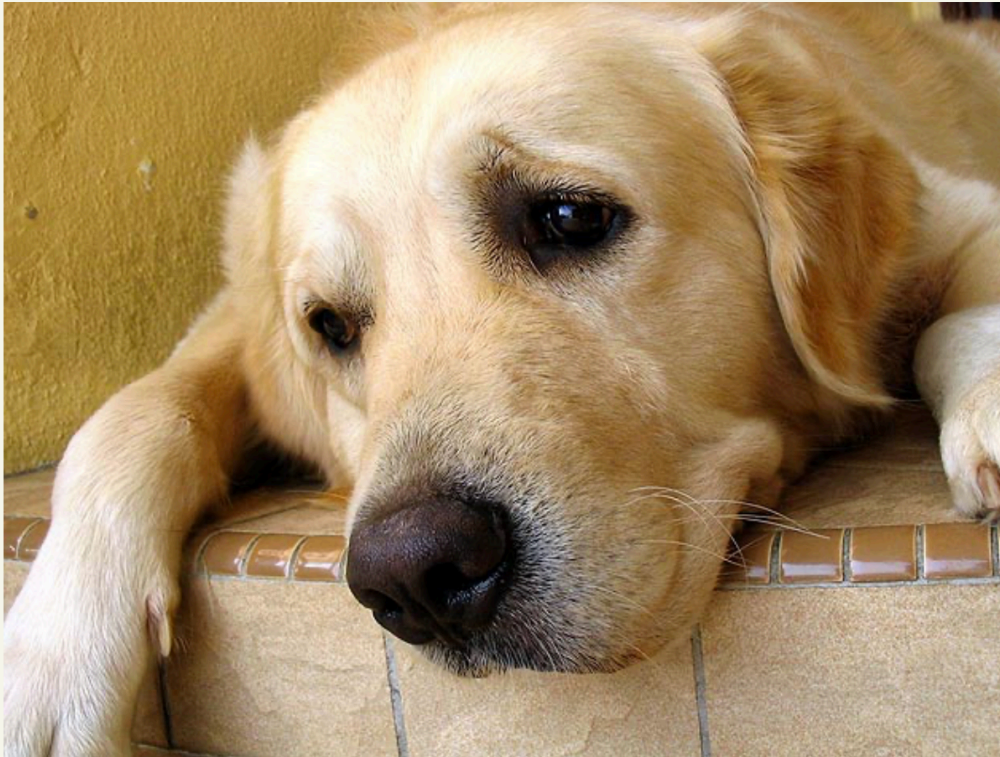
## The Olympia Fields Police Department Goes Green With The Purchase of Two 2020 Ford Utility AWD Hybrid Squad Cars

The Olympia Fields Police Department has purchased two 2020 Ford Utility AWD Hybrid squad cars. The simple fact is this: Police vehicles spend a lot of time idling on the job. About 60 percent of the time, cars are idling while police perform routine duties, including speed enforcement, traffic control, civilian motorist assistance and writing reports.

That's what makes the standard hybrid powertrain on the Police Interceptor Utility ideal for law enforcement. On-board electrical equipment can be powered using the lithium-ion hybrid battery, allowing the gasoline engine to shut off – running only intermittently to charge the battery.

The hybrid drivetrain will save between \$3,500 and \$5,700 per vehicle per year, Ford calculates. The savings of \$3,504 would be from using 1,200 fewer gallons of gas at \$2.92 a gallon in a hybrid getting 24 mpg in combined city/highway driving.

---



## **If Your Pet Is Lost, Contact The Olympia Fields Police Department and Nearby Animal Shelters**

Please register your dog with the Village and attach the tag to your dog's collar. The tag will identify the dog, the owner's information and address.

If your family pet is lost, contact the Village of Olympia Fields Police Department. Olympia Fields Officers and surrounding municipalities will be notified of your missing pet.

Also, contact nearby animal hospitals or shelters where all unlicensed lost dogs are sheltered, including the two listed below:

Lincolnway Animal Hospital  
6363 Lincoln Highway  
Matteson, IL 60443  
(708) 377-5695

South Suburban Humane Society  
1103 West End Avenue  
Chicago Heights, IL 60411  
(708) 755-7387

---



## Announcing the 2021 Beautification Committee Summer Landscape Award Program

This annual Village award program is designed to recognize homeowners who exhibit pride in ownership by maintaining beautiful landscapes. Homeowner associations are asked to submit a list of nominees citing their top three and at least three other homes that have also demonstrated significant efforts. The Beautification Committee then reviews the top three homes from each association to select the three village-wide winners. Viewing for this year's landscape awards will take place the week of July 12th.

In addition to the award certificate, the top three village-wide awardees selected will also be given a nursery gift certificate for first, second and third place honors, respectively valued at \$100, \$75 and \$50. The awards will be presented formally at a Village Board meeting following the close of the selection process.

If you would like additional information about the Summer Landscape Program, please contact Village Hall at (708) 503-8000 and leave a message for a Beautification Committee representative, or click the button below.

The deadline for submittal and guidelines will be forwarded to all Homeowners Association Presidents and their Beautification representatives.

[Learn More About the Summer Landscape Award Program](#)





## The Village Offers A Branch Pick Up Program to Olympia Fields Residents

With the Village's program, residents can schedule branch pick up directly with the Public Works Department. Once the branches are cut, stack them in the front of your property by the street and contact the Public Works Department at (708) 503-8200 to schedule a pickup. The Village does not have the resources or equipment to pick up logs, stumps or branches more than 10-inches in diameter.

Weather permitting, the Public Works Department will be out on Fridays to pick up branches on its scheduled list.

Your regular refuse company should pick up all other yard waste such as weeds, flowers and grass clippings. Please do not mix these with branches or we will not be able to remove for disposal.

Branch Pick Up Program is for branches cut down by residents. The program is not for branches removed by a tree service. If you have a tree cut down, the contractor must remove the branches and logs.

The goal of the Public Works Department is to ensure that the needs of our residents are met. Please know that if you have any concerns or questions, feel free to contact the Public Works Department at (708) 503-8200.

[Learn More About Branch Pick Up Here](#)

## Learn Proper Techniques for Pruning Mature Trees

*"Pruning is the most common tree maintenance procedure. Although forest trees grow quite well with only nature's pruning, landscape trees require a higher level of care to maintain their structural integrity and aesthetics. Pruning must be done with an understanding of tree biology. Improper pruning can create lasting damage or even shorten the tree's life."*

The article linked below and quoted above was developed by the International Society of Arboriculture (ISA), a non-profit organization supporting tree care research around the world and dedicated to the care and preservation of shade and ornamental trees, and provided to you by the Village Beautification Committee.

[Learn About Pruning Mature Trees Here](#)



## Homeowners Association Corner: The Original Village Homeowners Association (OVHA)

The Original Village Homeowners Association (OVHA) represents 164 homes. We continue to see our neighbors as valuable and important participants who work together to build a neighborhood all are proud to call home, where other families want to live and feel the feeling of belonging.



Because OVHA does not have a covenant and our annual assessment dues are low, we choose to embark on creative activities to engage with each other. HOA meetings are preceded by our newsletter. We hold holiday parties for children, an annual Family & Friends Picnic and a Chat & Chew walking trip to the homes of our neighbors.

Our latest initiative welcomes newcomers to the homeowners association and the village: "The Little Red Wagon" is filled with gift items and important information and delivered by several long-termed residents.

These activities highlight some of our efforts, from our valued residents, to build meaningful relationships and foster a sense of neighborliness.

- Original Village Homeowners Association President Sharon G. Bean

---



**Village of Olympia Fields**  
**20040 Governors Highway**  
**Olympia Fields, IL 60461**  
**708-503-8000**

[Visit Our Website](#)